



Hull 091

Volcan de Tagoro

walk through the 111m

Wave Piercing Catamaran



Introducing Volcan de Tagoro

**Bathed in red, white and grey,
Incat 091's sleek and modern lines
strike an imposing silhouette.**

A thoroughly modern and purposeful appearance promises speed, comfort and quality for all those who travel aboard.

The vessel can accommodate 1200 passengers and crew whilst offering 595 truck lane metres (TLM) together with 219 cars, or space for 401 cars over two decks. Sporting Wi-Fi, satellite television, integrated CCTV, full climate control and an efficient and clean powertrain, 091 is the perfect example of a vessel for the 21st century.

Internal Facilities

Luxurious open spaces and extensive facilities are available to all passengers. An abundance of natural light provides an air of subtle and restrained elegance. Plush carpets, hardwearing wood finish walkways, tasteful coloured wall panelling and stainless steel handrails are featured throughout. All passenger areas offer a flexible mix of seating and tables where travellers can relax, enjoy the scenery, or make use of the onboard entertainment.

A colourful children's playroom, parent's lounge, shop, purser's office, disabled toilet, ceiling mounted televisions and an open promenade deck at the stern are available to all. Toilets feature quartz or marble benchtops and hygienic air blade hand dryers, with the disabled toilet offering a baby change table.

The vessel's bars and kiosk feature stainless steel food grade benches, cabinets and storage. Liberal use of lighting, glass and colourful light panels give a fully customisable, club-like ambience for all first class, business and economy passengers.

Crew are catered for with cabins located on the upper vehicle deck both port and starboard. Lounge seating, refreshment, showering and toilet facilities are also provided in a crew room on the passenger deck. It comes equipped with network access to the kiosk, shop, ship's telemetry and internet access.





First Class Seating

Dark mocha panelling and deep red carpet add a sensation of luxury to the First Class cabin, situated aft on the passenger deck. Well-appointed with cappuccino leather-look seating and beige marble tables, business passengers can enjoy a view of the passage travelled from the stern windows.

Travellers can charge their devices from power sockets and type A/type C USB outlets at each seat table. First Class passengers have access to a private outdoor seating area with high-back bench seating which extends across the stern from amidships to the starboard side.

A generous bar with beer taps, fridge and freezer, secure swipe-card style doorway access and exclusive female and male toilets complement a secluded space away from the activity of the main cabin.

Business Seating

Business passengers are treated to a bright and spacious compartment at the bow of the ship, with beautiful 180 degree views from the forward and side windows.

Appointed with both freestanding and integrated tables, comfortable reclining and bucket seats, passengers can unwind whilst having sole access to male and female toilet facilities with distinctive marble and elm finishes.

Security via swipe-card door access and a restricted bar equipped with beer taps, a fridge and freezer allows customers to enjoy their trip in a more exclusive and intimate setting.





Economy Seating

Passengers travelling in economy have access to a spacious mid-ship cabin. A tasteful combination of deep red, green and grey seating provides occupants with a light and sophisticated space. Mirror and white surfaces make up the ceilings with decks covered in slate black tiles, blue patterned carpet and chateau oak vinyl planked walkways.

Tired passengers can retreat to an isolated entertainment and quiet area in the aft area of the deck. Users are presented with airline-style reclining seats, tables and two large cinema-style televisions.

Refreshments from a bar and kiosk are provided, with stainless steel and glass cabinets to display hot and cold meals, drinks and desserts. Guardrails adjacent to the counter marshal users in an orderly fashion when ordering and purchasing items.

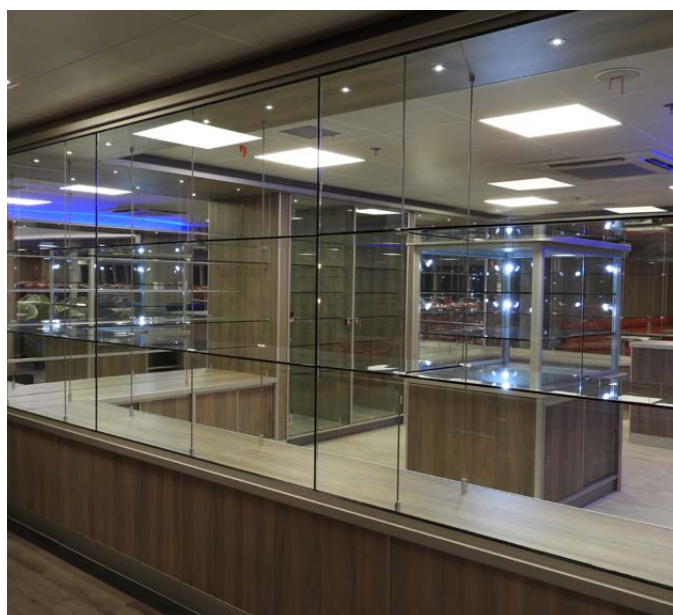
Pantry

Ample food storage and preparation capacity is provided by the amidships pantry. Equipped with extensive shelving, three convection ovens, substantial fridge and two freezers, the pantry can cater for a large variety of food and drinks.



Shop

Characterised by its generous use of glass shelving, white oak panelling and quality stainless steel fittings, the vessel shop is a fresh and welcoming space in which passengers can peruse a selection of goods whilst on-board.



Purser's Office

The centrally located purser's office controls the public announcement and entertainment system, and acts as a permanent point of contact between crew and passengers.



Boarding Facilities

Vehicles come aboard via an articulated two-piece ramp at the stern, with traffic directed up the port side. Smaller vehicles can make their way up to the upper deck via a ramp at the bow. Large trucks are able to drive on and off without reversing as the lower deck layout allows them to turn from the port side to the centre and starboard lanes. Foot passengers can also use the vehicle ramp to board when docking at Mediterranean style berths.

The vehicle decks are bright and open with natural light coming from openings in the bow and stern. A durable and low maintenance bead blast is applied to each deck to prevent tyre skid. Structural members are painted in yellow to ensure any obstructions to vehicles or passengers are easily spotted.

Foot passengers coming aboard via port and starboard gangways on the upper vehicle deck are greeted with a clean and inviting entry. Fully enclosed and fire protected stairwells forward, aft and amidships allow easy access to the passenger deck. A wheelchair accessible lift on the starboard side can transfer up to eight passengers between the three decks.

