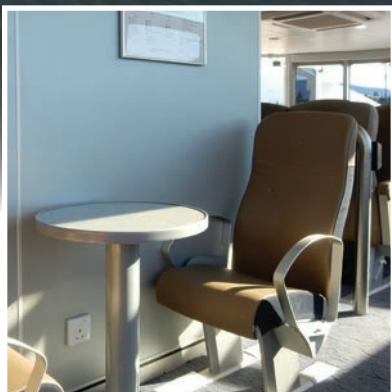


INTRODUCING

Galaxy Clipper & Neptune Clipper



mbna
thames clippers



Hull 075

Galaxy Clipper

Hull 076

Neptune Clipper

The low rakish profile of these two new sister vessels speak of purpose and speed. MBNA Thames Clippers purpose designed and built vessels sit with an expectant air about them as they are readied for service. They look fast even when laying alongside the dock, ready to burst into efficient action.

The striking colour scheme with the blue antifouling topped with red and the contrasting white hull with blue topsides give a fresh and appealing look together with the panoramic side windows and specially designed low profile wheel house.





PURPOSE AND SPEED



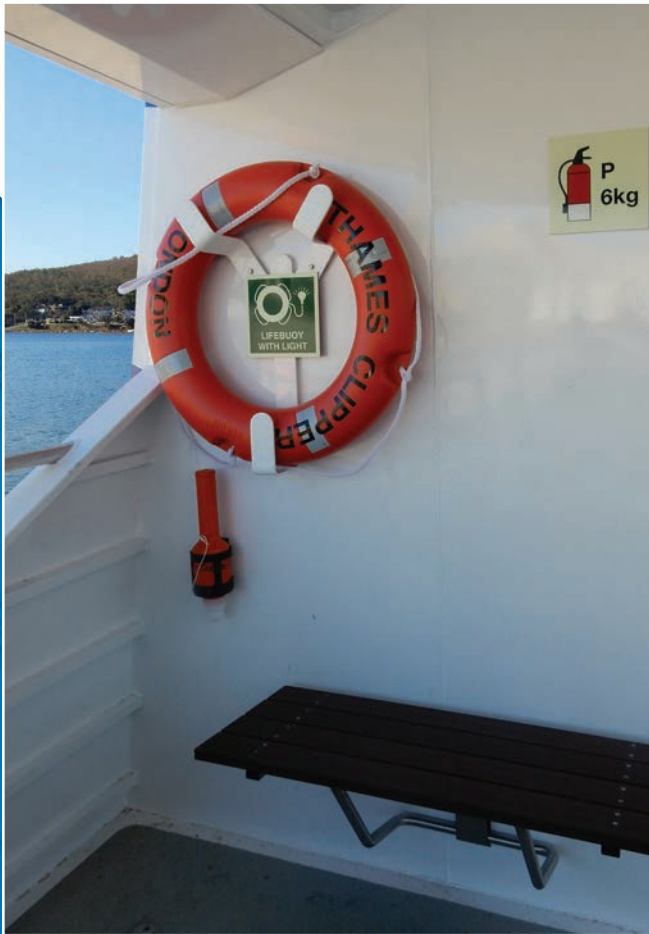


When first approaching the vessel from the front, the clear destination box is evident showing the route number and the route specifics, making the destination clear for the commuters the vessel is about to carry.

Entering the forward gangway onto the vessel you are greeted with a work-like, but clean and appealing forward open air section with great forward vision, before entering the main passenger cabin through either of the forward doors.

The immediate impression when entering the main cabin is of a bright open plan seating area with the side windows wrapping up onto the ceiling giving a splendid panorama of the passing view.

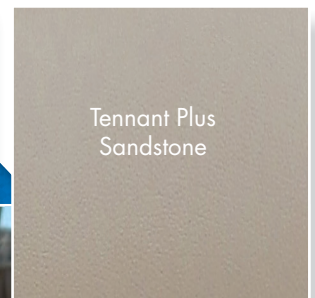




Comfortable, wide companionways down both sides of the vessel add to the openness and airiness of the interior, taking the commuter past the centrally placed kiosk and through the aft doors out to the rear covered open air deck space which is also equipped with comfortable all weather aft facing seating.

There is also a forward facing teak lined bench seat at the very aft end of this deck space which doubles as the main battery box giving maintenance staff easy and convenient access. Aft dockside access to the vessel is also onto this deck space. The ceiling in this area features four large glass panels to take full advantage of the available light.

A forward curved lounge area will be a very sought after area for commuters and families alike due to the great forward view. The seating and interior colours generally are subdued and soothing to the eye and will be a much needed feature for commuters speeding their way home after a busy day in the city.

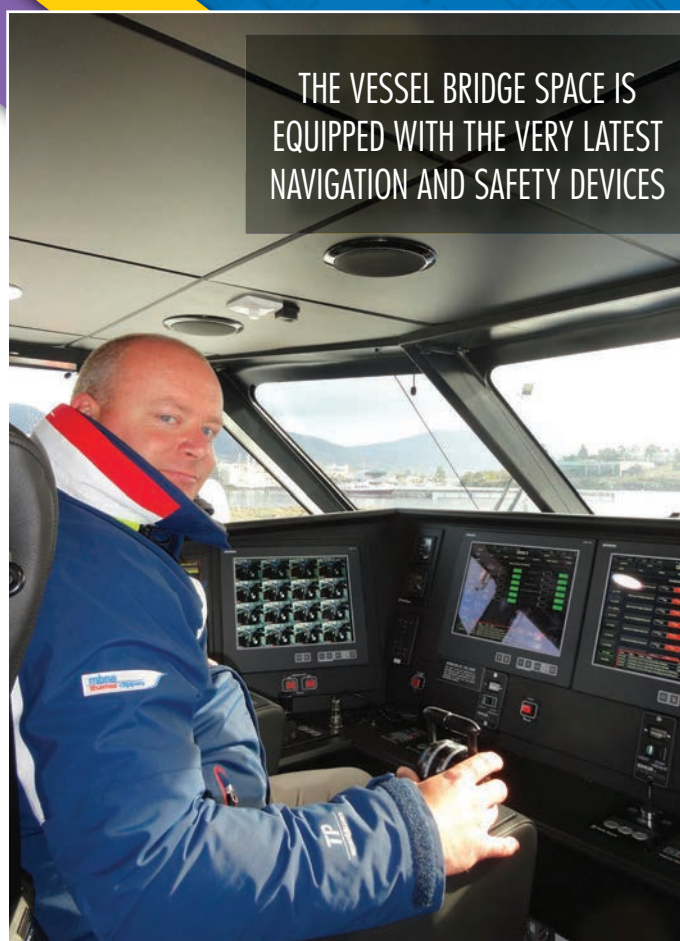




Accessed from the aft deck is the wide door toilet area that caters for both disabled access as well as being equipped with a baby change table, wash basin and air hand dryer.

The vessel is equipped with two wheelchair spaces, one each side of the toilet enclosure structure inside the passenger cabin.

The aft deck of the vessel has two structures which are the engine room access points into each hull. Just aft of these on a separate deck space are three bicycle racks per side for those fitness seeking passengers who cycle to and from the ferry terminal.



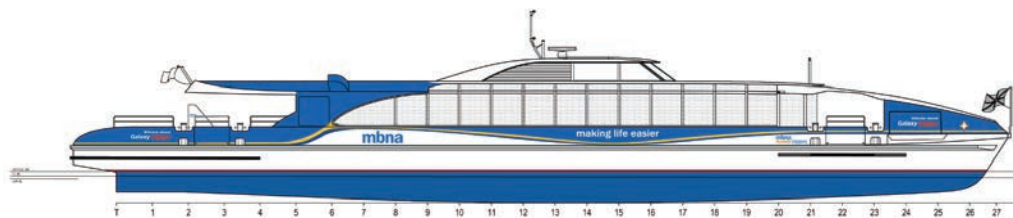


Under the passenger deck in each hull, the machinery that powers the vessel and its systems are housed, beginning with Scania D116 072M V8 marine diesel of 588 kw (800hp) output close coupled to a ZF 200 series gearbox that drives power through to the Kamewa 40A3 water jet via universal jointed drive shafts to minimise any mechanical vibration through the vessel. Kohler EFOZCJ 33kw generator sets provide electrical power to all systems.

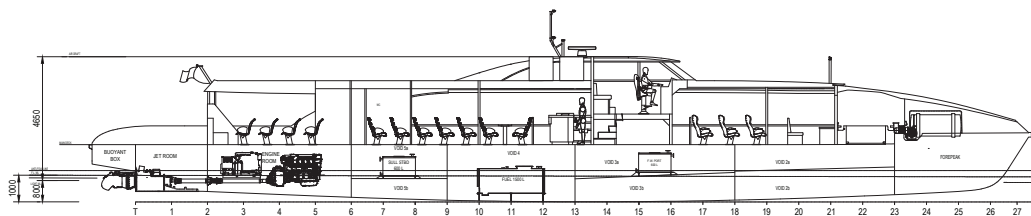
The vessel hulls are divided into watertight void spaces to ensure stability and water tight integrity to the vessel but these spaces also double as storage spaces for separate diesel fuel tanks in each hull, also the fresh water storage tank in the port hull void 3 and the sullage tank in the starboard void 5 space.



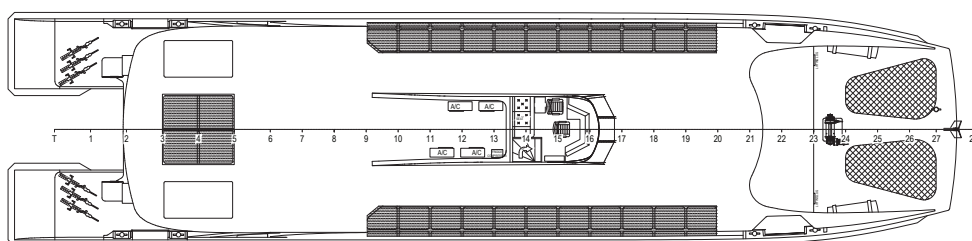
PASSENGER INFORMATION IS
RELAYED VIA AFT FACING TELEVISION
SCREENS THAT ARE VIEWABLE TO ALL
SEATED PASSENGERS.



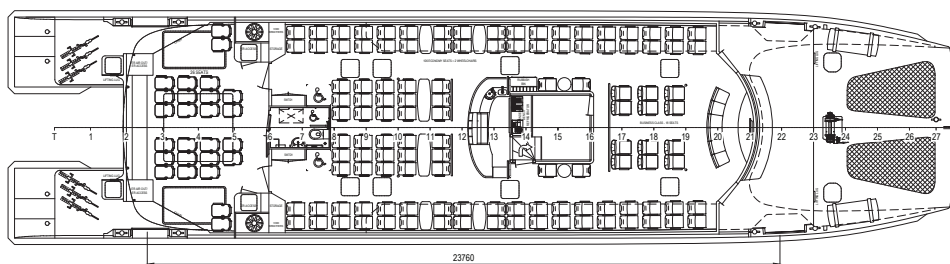
Profile View



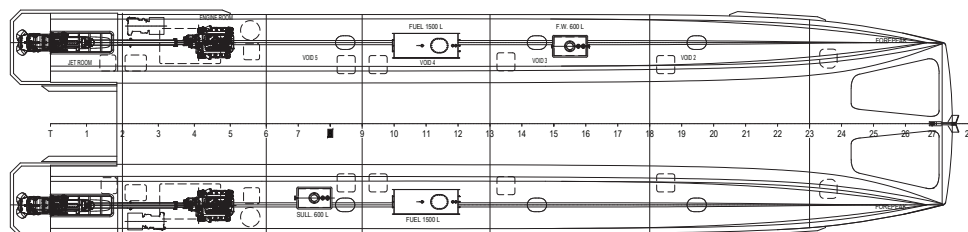
Centreline Profile



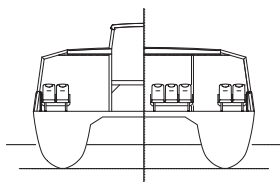
Upper Deck



Main Deck



Below Decks



Typical Section



PRINCIPAL PARTICULARS			(APPROX)
Length Extreme	35.37 m	Draft	1.00 m
Length WL	32.69 m	Fuel	2x1500 L
Beam (Overall)	8.80 m	Fresh Water	600 L
Beam (Moulded)	8.30 m	Sullage	600 L
Depth (Moulded)	2.15 m	Seats	150
		Internal - Tourist	106
		Internal - Business	18
		External	26
		Internal Seats - Beurteaux "Tourist"	
		- Beurteaux "Club"	
		External Seats - Beurteaux "Outdoor"	

33m PASSENGER CATAMARAN GENERAL ARRANGEMENT

02 JUNE 2015

One 2 Three Pty Ltd | 11 Phillips Rd | Kogarah | NSW | 2217 | Australia | Tel: +61-2-9553-0366 | Fax: +61-2-9553-0344 | design@one2three.com.au
THIS DRAWING AND ALL INFORMATION CONTAINED WITHIN REMAIN THE SOLE PROPERTY OF ONE 2 THREE PTY. LTD. NO PART MAY BE COPIED, MODIFIED OR REPRODUCED IN ANY MANNER WITHOUT THE
PRIOR WRITTEN PERMISSION OF ONE 2 THREE PTY. LTD. © 2014

DRAWING # 13049-0002 REVISION AF A1 SHEET SCALE 1:100

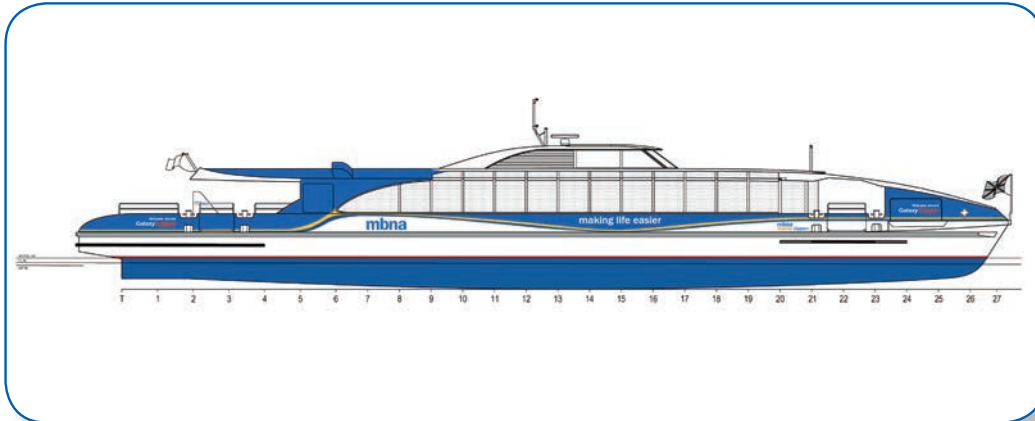
35m

HULL 075



Hull 075

35m Passenger Catamaran



General Particulars

Yard No	075
Designer	One2Three
Builder	Incat Tasmania Pty Ltd.
Society	DNV-GL
Class Notation	DNV + 1A1 HSLC Passenger R4 EO
Flag	United Kingdom
Speed	Over 25 knots at full displacement 30 knots at light displacement
Regulations	HSC Category A with MCA Equivalences appropriate to operation in UK Category C waters

Principal Dimension

Length Overall	35.37m
Length Waterline	32.45m
Beam Moulded	8.30m
Hull Depth Moulded	2.15m
Load Draft	1.00m

Capacities

Passengers	150
Crew	3

Tankage

Diesel Fuel	2 x 1500 Litres
Fresh Water	500 Litres
Black water	500 Litres

Deadweight

Full Load Deadweight:	
Passengers	
(150 @ 80kg each)	12.00 Tonnes
Crew (3 @ 80kg each)	0.24 Tonnes
Fuel 100% (usable volume)	2.04 Tonnes
Fresh Water 100%	0.50 Tonnes
Sullage 10%	0.05 Tonnes
Bar Provisions	0.20 Tonnes
Stores	0.10 Tonnes
Total (100% Deadweight)	15.13 Tonnes

Construction

The hull construction is of marine grade aluminium.
The hull form is semi-round bilge with symmetric hulls.

Machinery

Main Engines	2 x Scania DI16 072M marine diesel engines, rated at 625kW (850hp) @ 2300rpm
Gearboxes	2 X ZF2000, reversing with PTO
Waterjets	2 x Rolls Royce/Kamewa 40A3
Generators	2 x Kohler 33EFOZDJ

Electrical

Electrical System	415/240V 50Hz AC supplied by two diesel alternators, located in the engine rooms 24V DC for emergency back-up and controls of machinery
-------------------	--

Air Conditioning

Passenger Space	3 x Independent air cooled packaged units and ceiling cassettes
Wheelhouse	1 x Independent compact type air cooled cassette
Ambient Temperatures	+35°C to -10°C

Safety and Evacuation

Liferafts	2 x LSA 128 person open-reversible 1 x RFD Ferryman 30 person
Life Jackets	165 adult and 16 child Premier 2010
Medical supplies	2 x Category C First Aid packs
MISC equipment	2 x Jason cradle

Navigation and Communication

Radar	Furuno NavNet DRS4A, 48nm
Compass	Platismo Offshore Class B
Speedlog	Walker 7070MK2F
GPS	Furuno GP-170, 6"LCD
Radios	2 x Sailor 6222 VHF/DSC 4 X ICOM IC-M35 VHF handheld
AIS	Thames AIS
Public Address	Gitiessie Imcos PA/GA
Control/Monitoring	Maps/Böning AMS

Details provided are based on original design and certification.

For information on Incat representatives in your region contact head office

18 BENDER DRIVE DERWENT PARK HOBART TASMANIA 7009 AUSTRALIA P: +61 (0) 3 6271 1333 F: +61 (0) 3 6273 0932 E: INCAT@INCAT.COM.AU




AUSTRALIA (Head Office & Shipyard)

Incat Australia Pty Ltd
18 Bender Drive, Derwent Park
Hobart, Tasmania 7009

P: +61 (0) 3 6271 1333
F: +61 (0) 3 6273 0932
E: incat@incat.com.au

For information on Incat representatives
in your region contact head office.

 www.incat.com.au