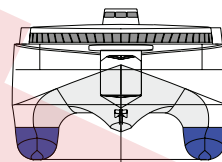
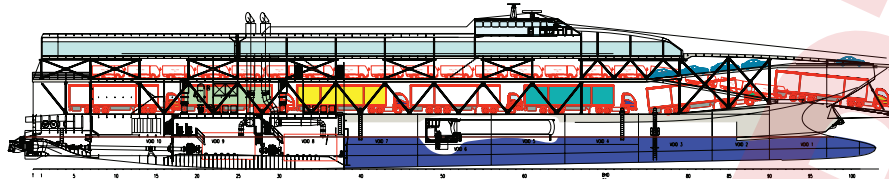


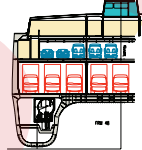
OUTBOARD PROFILE



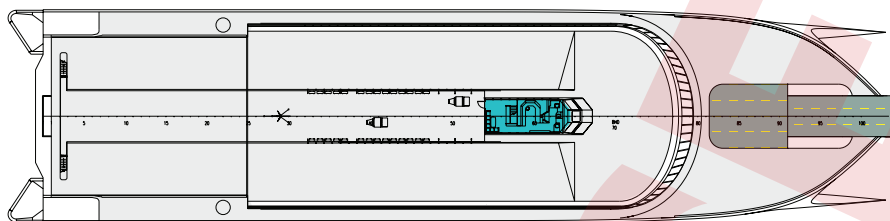
BOW ELEVATION



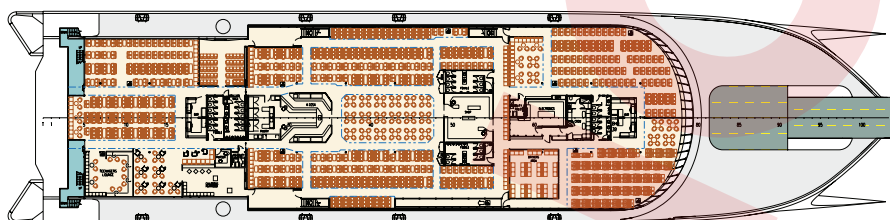
INBOARD PROFILE



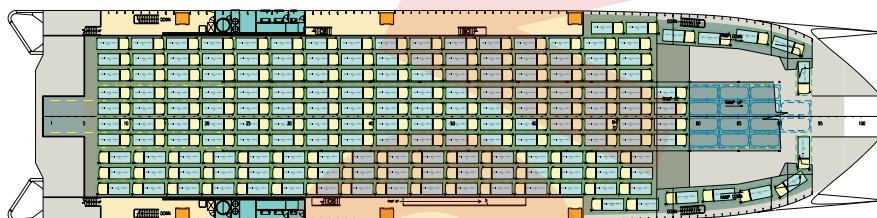
TYPICAL SECTION



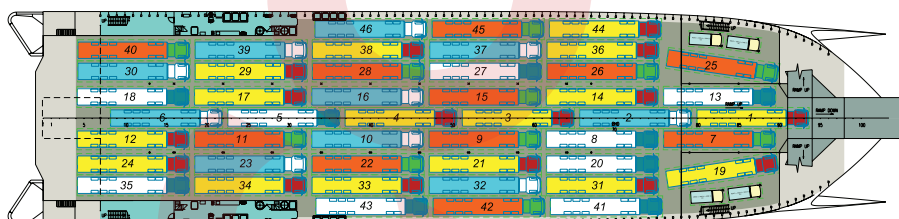
UPPER DECK PLAN



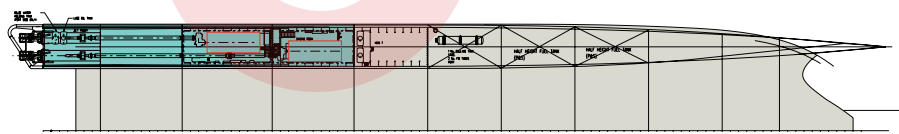
TIER 3



TIER 2



TIER 1



PLAN BELOW DECKS



130m Dual Fuel Ro-Ro Passenger Ferry

Principal Particulars

Length OA	130m
Water Line Length	123.6m
Beam	31.2m
Draft	4m

Capacities

Deadweight (max)
Approx 1700 tonnes

Vehicle Deck Capacity
736 truck lane metres at 3.1m wide
and 4.6m clear height plus 940 lane
metres at 2.3m wide and 2.5m clear
height

Complement 1376 persons

Propulsion Machinery

Main Engines

4X Wartsila 16V34DF Marine
diesel engines rated at 7200 kW
each.

Waterjets

4X Wartsila LJX 1300