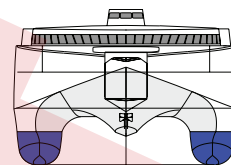
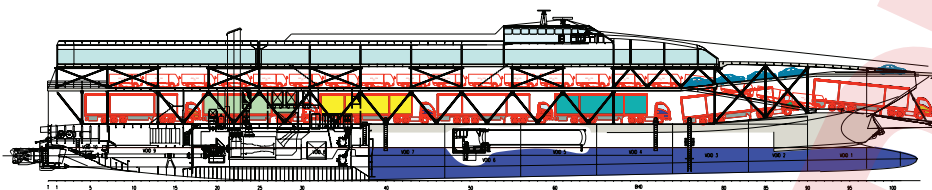


OUTBOARD PROFILE



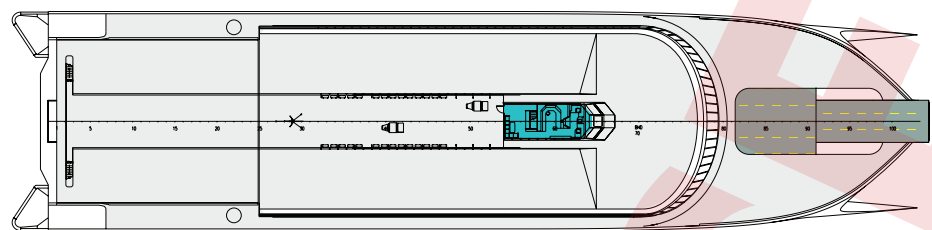
BOW ELEVATION



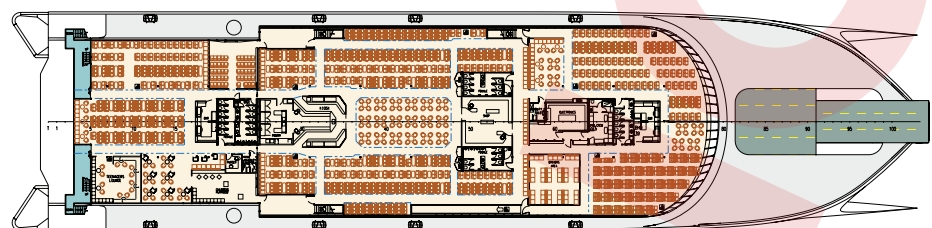
INBOARD PROFILE



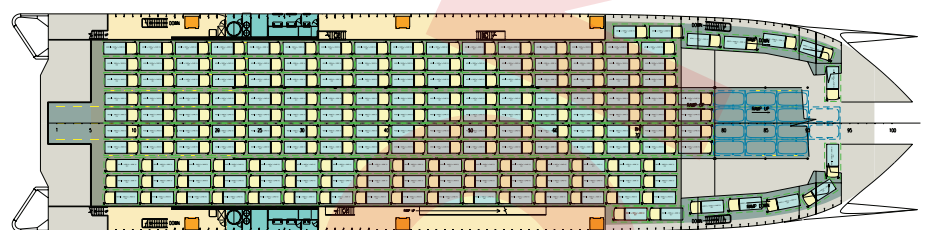
TYPICAL SECTION



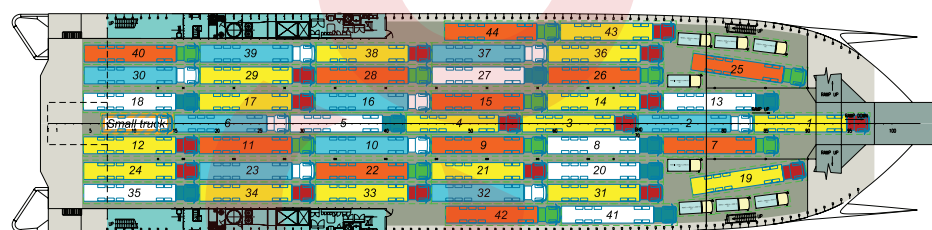
UPPER DECK PLAN



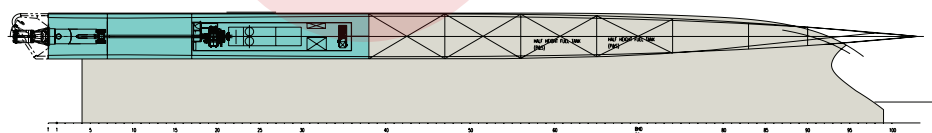
TIER 3



TIER 2



TIER 1



PLAN BELOW DECKS



130m Gas Turbine Ro-Ro Passenger Ferry

Principal Particulars

Length OA	130m
Water Line Length	123.6m
Beam	31.2m
Draft	4m

Capacities

Deadweight (max)
Approx 1700 tonnes

Vehicle Deck Capacity
736 truck lane metres at 3.1m wide
and 4.6m clear height plus 940 lane
metres at 2.3m wide and 2.5m clear
height

Complement 1376 persons

Propulsion Machinery

Main Engines

2X GE Energy LM2500 Marine Gas
Turbines rated at 23,000kW each.

Waterjets
2X Wartsila LJX 2020