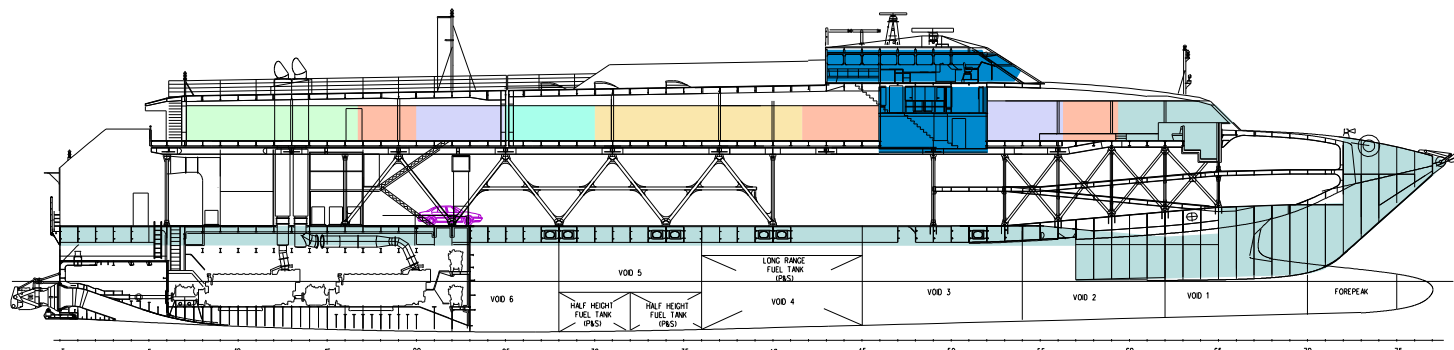
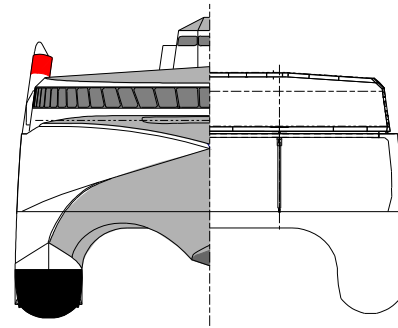
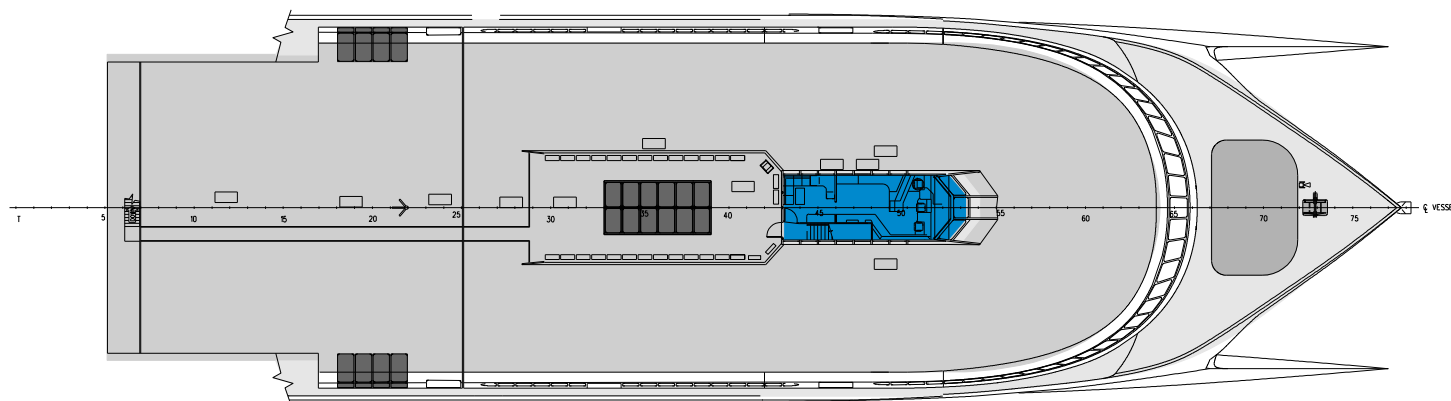


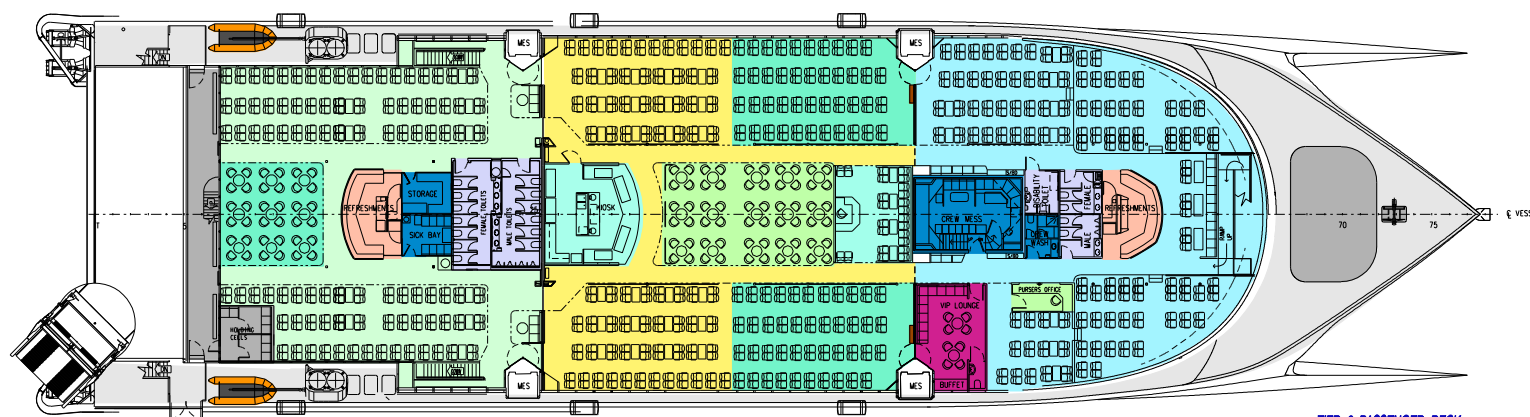
OUTBOARD PROFILE



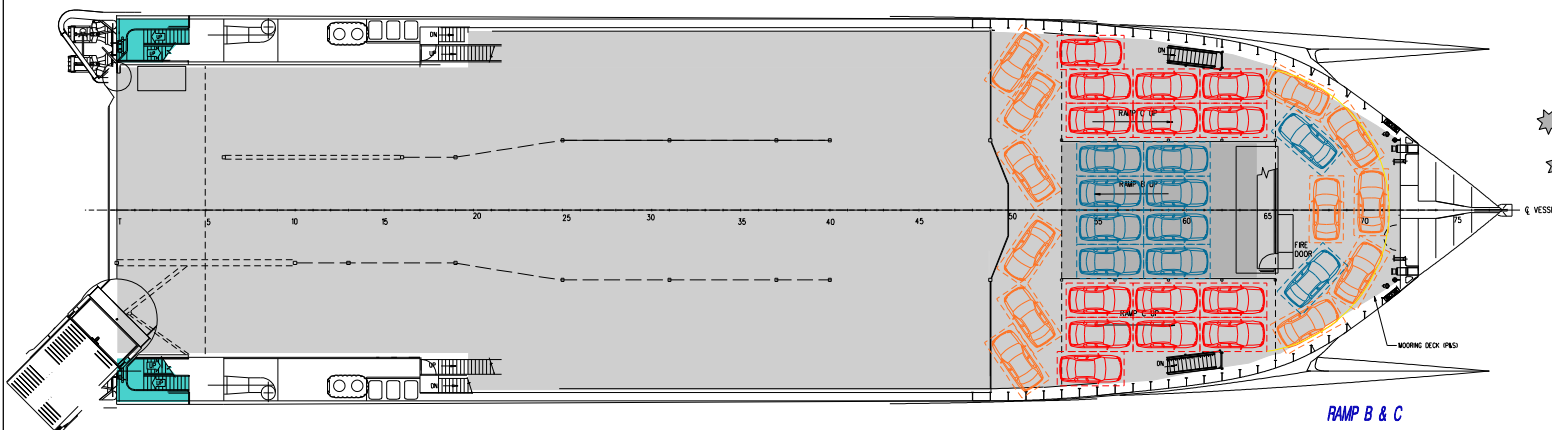
INBOARD PROFILE



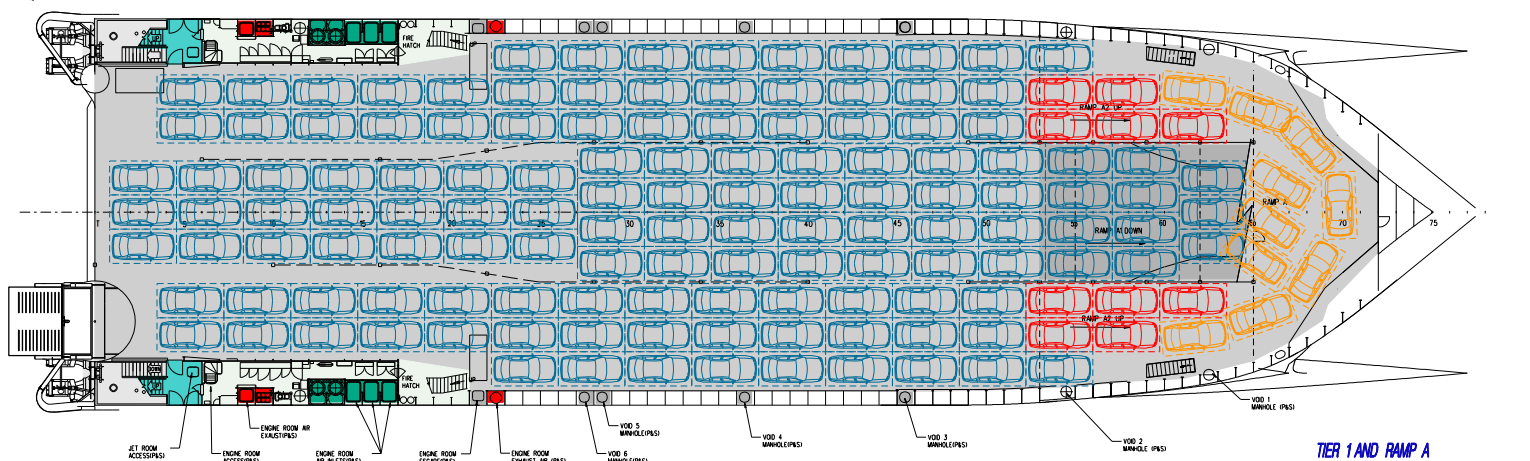
DECK AND WHEELHOUSE LAYOUT



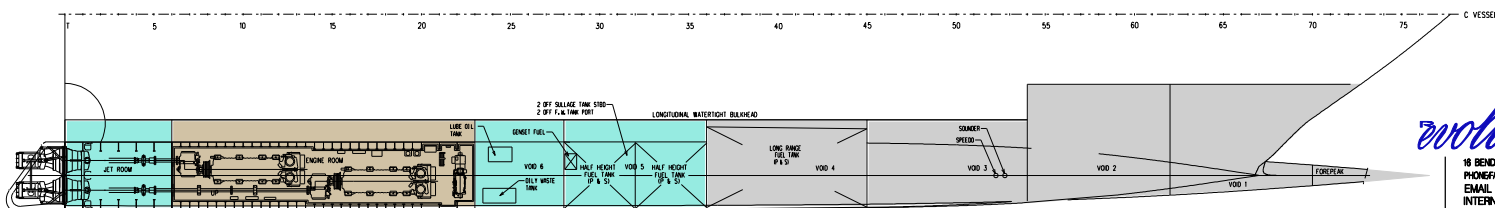
TIER 2 PASSENGER DECK



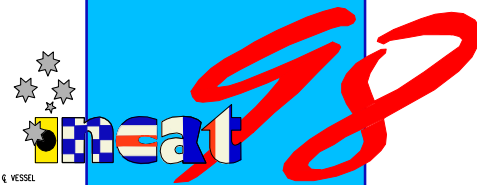
RAMP B & C



TIER 1 AND RAMP A



PLAN BELOW DECKS



Length overall 97.22m
 Length waterline 92.00m
 Beam overall 26.62m
 Draft @ full displ. 3.40m
 Draft @ lightship 2.30m
 Deadweight 725 tonnes

Total car capacity (min) 180 spaces
 @ 4.5m X 2.3m.

Total truck capacity approx. 380 lane metres
 plus 80 cars @ 4.5m X 2.3m

Complement 900 persons



18 BENDER DRIVE MOONAH TASMANIA 7008 AUSTRALIA
 PHONE/FAX +61 3 6274 1946
 EMAIL: revolutiondesign@revolutiondesign.com.au
 INTERNET: www.revolutiondesign.com.au

98 M WAVE PIERCING CATAMARAN
 PROPOSED
 GENERAL ARRANGEMENT

ISSUED TO:	ISSUE DATE:
ISSUED BY:	APPROVED BY:
DATE:	SCALE:
DWG. No:	REV. DATE:
CPV-98-32-457	E 08 MAR 07

THE DRAWING AND THE INFORMATION CONTAINED HEREIN IS THE PROPERTY OF REVOLUTION DESIGN AND IS TO BE USED ONLY FOR THE PROJECT AND FOR THE PURPOSES SPECIFIED IN THE TITLE BLOCK. IT IS NOT TO BE REPRODUCED OR TRANSMITTED IN ANY FORM OR BY ANY MEANS, ELECTRONIC OR MECHANICAL, INCLUDING PHOTOCOPYING, RECORDING, OR BY ANY INFORMATION STORAGE AND RETRIEVAL SYSTEM, WITHOUT THE WRITTEN PERMISSION OF REVOLUTION DESIGN.