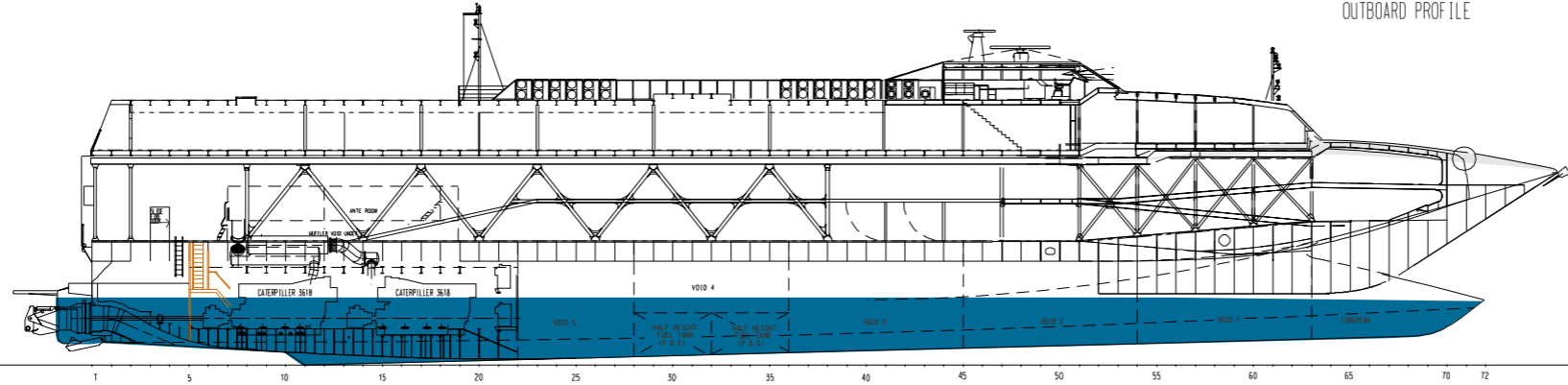
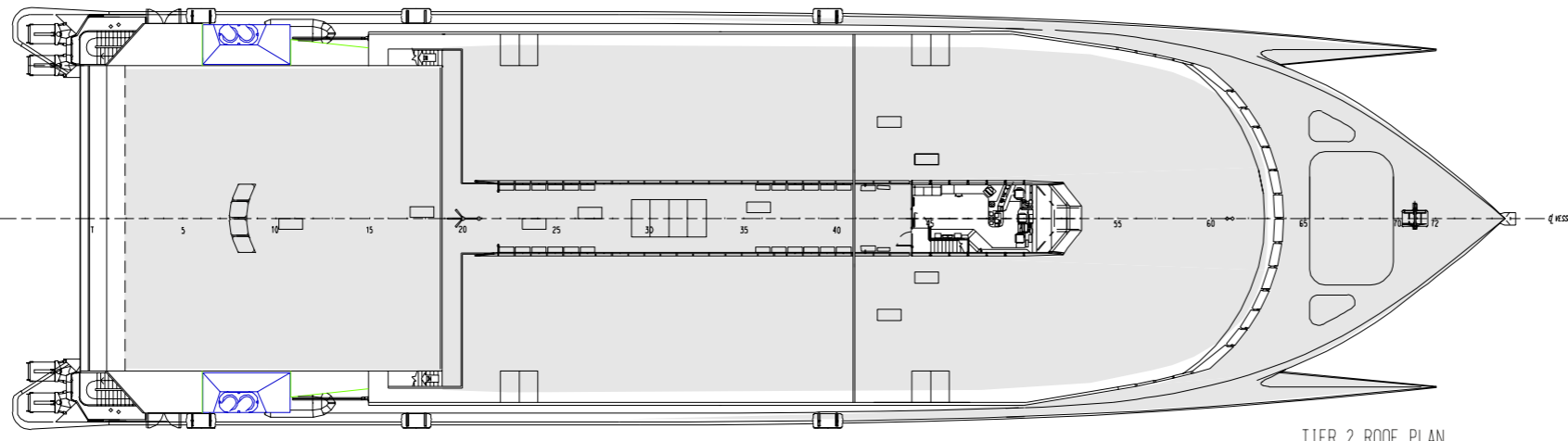


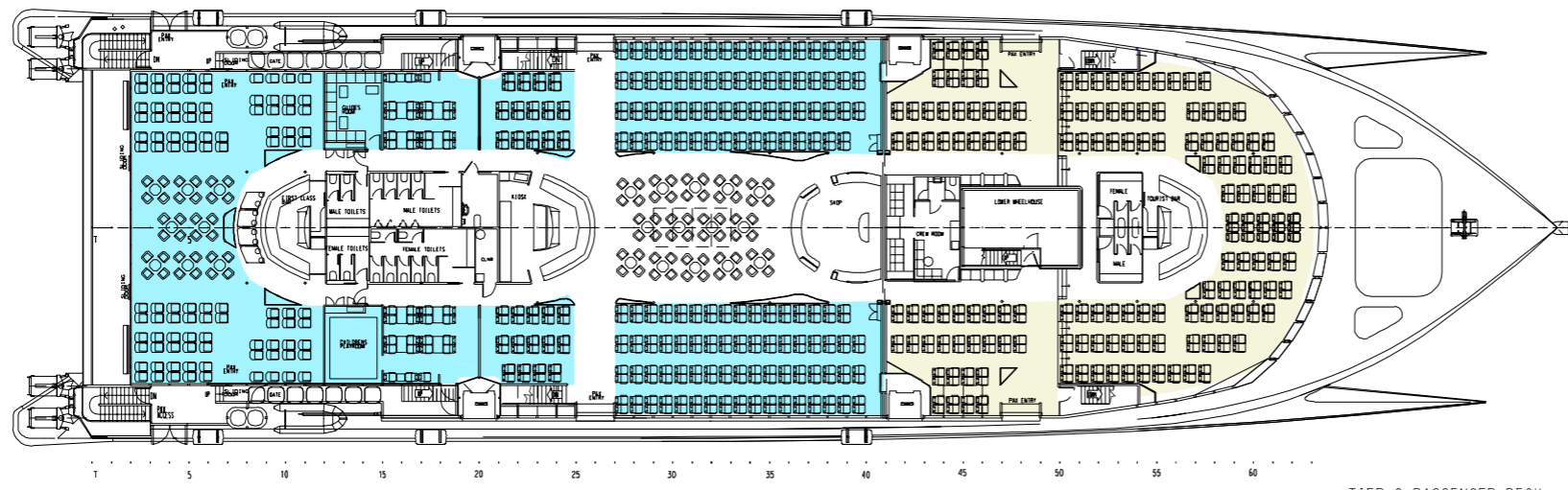
OUTBOARD PROFILE



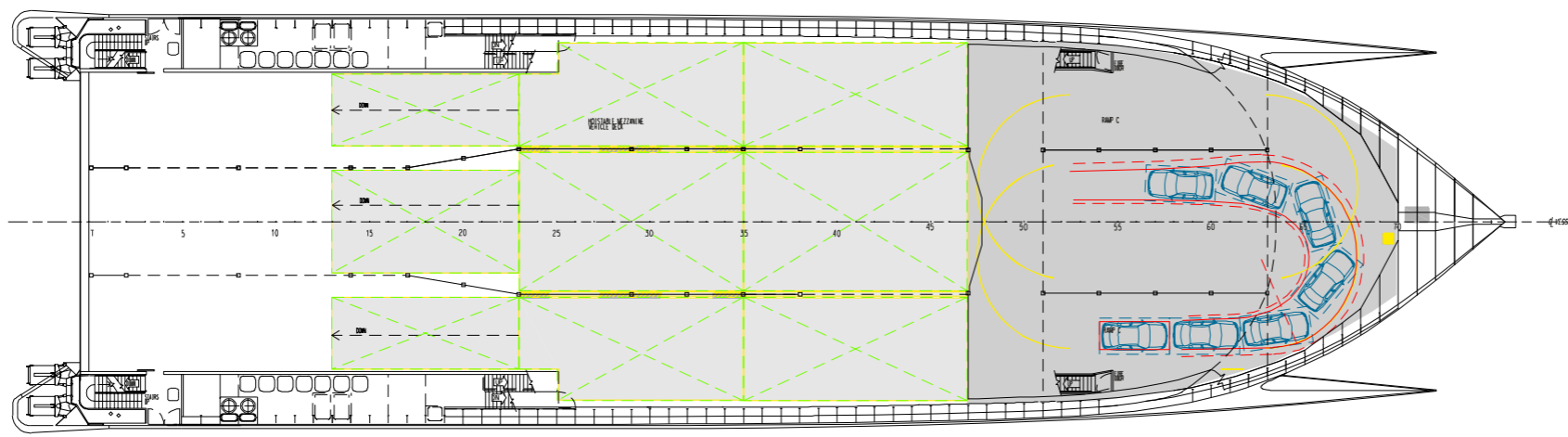
INBOARD PROFILE



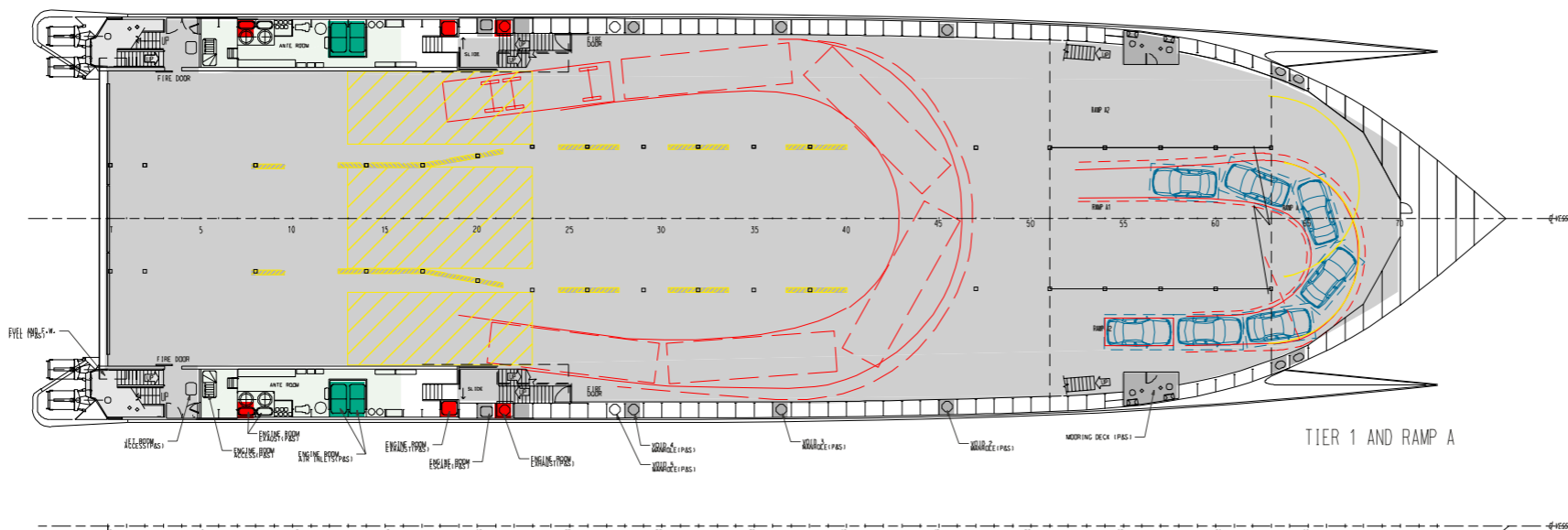
TIER 2 ROOF PLAN AND WHEELHOUSE LAYOUT



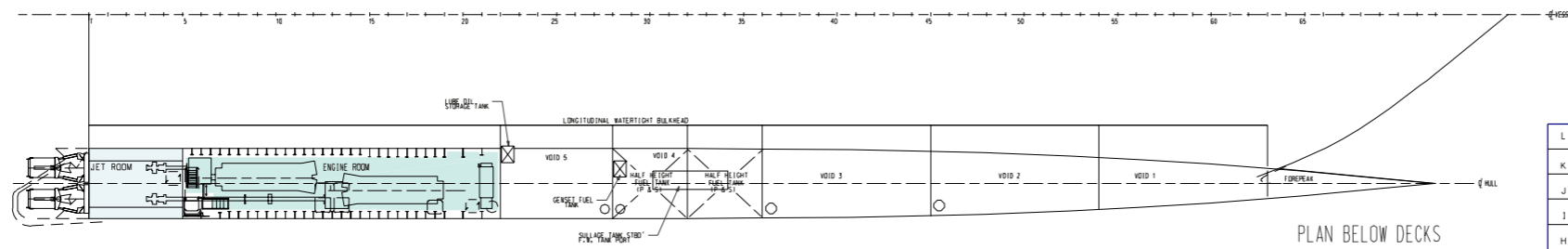
TIER 2 PASSENGER DECK



RAMP B & C



TIER 1 AND RAMP A



PLAN BELOW DECKS

L	6 SEPT '99	IML	REVISIONS
K	10-08-99	MGR	ADDITIONAL SEATING ADDED FROM FRW 27-40 PORT AND STARBOARD
J	4-08-99	MGR	ADDITIONAL SEATING ADDED FROM FRW 27-40
I	24 JULY '99	G.S.	ENGINE BEARERS AND SUPERSTRUCTURE ON INBOARD PROFILE UPDATED
H	14 JULY '99	G.S.	FT1 PASSENGER STAIRS UPDATED. GLASS DOORS TO FIRST CLASS CHANGED TO SINGLE DOORS
G	5-07-99	MGR	NAVIGATION LIGHTS AND MASTS UPDATED
F	22-6-1999	MGR	MUFFLER PROFILE OUTBOARD UPDATED. FUNNEL STRUCTURE UPDATED ON ROOF PLAN
E	29-4-99	G.S.	GENERAL UPDATE OF DETAILS
D	22 MAR '99	G.S.	SEATING LAYOUT REVISED. SUPERSTRUCTURE MODIFIED. WATER SEPARATORS MOVED
C	08 FEB '99	GLD	GENERAL MODIFICATIONS TO PAX AREA AND VEHICLE DECK
B	09 DEC '98	GLD	CENTRAL SERVICES & FOOD HALL LAYOUT MODIFIED. NEW WHEELHOUSE ADDED.
A	OCT '98	M.R.	DRAWING TO BE UPDATED TO CLIENT REQUIREMENTS

NO	DATE	DRN	CKD	REVISION
YARD NO.	053			LEVELED DESIGNED BY
18 BENDER DRIVE MONAH TASMANIA 7009 AUSTRALIA TELEPHONE (03) 62730677 FACSIMILE (03) 62730932 - 62720072				
TITLE		DRAWN BY		SCALE
96m WAVE PIERCING CATAMARAN FERRY		G. DOYLE/M RALPH		1/200
GENERAL ARRANGEMENT		CHECKED BY		DATE
		GLD		1-10-99
DRG. NO.		REV.		
053-09-32-001		L		

DRAWING NO.	REFERENCE DRAWINGS