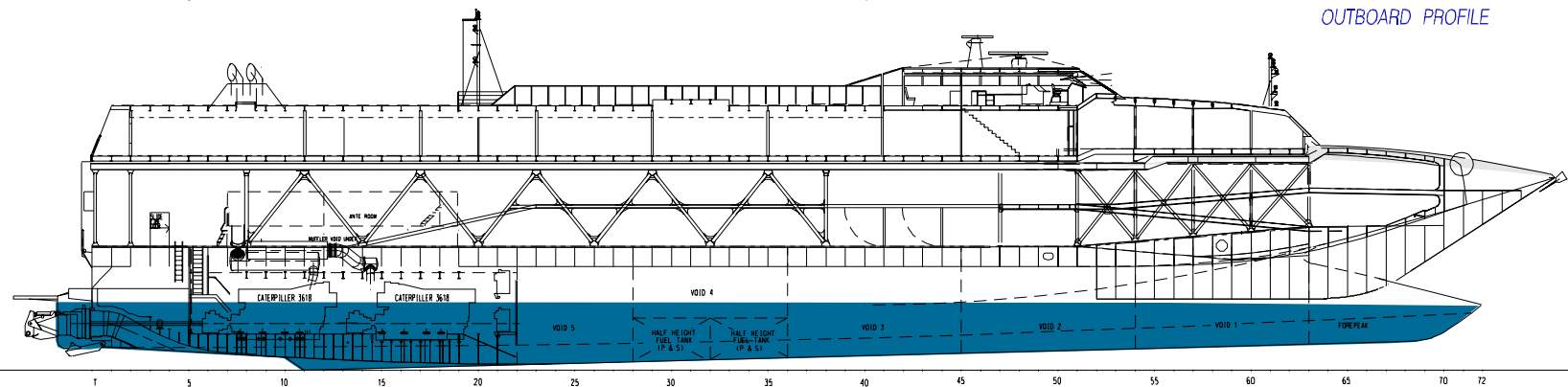
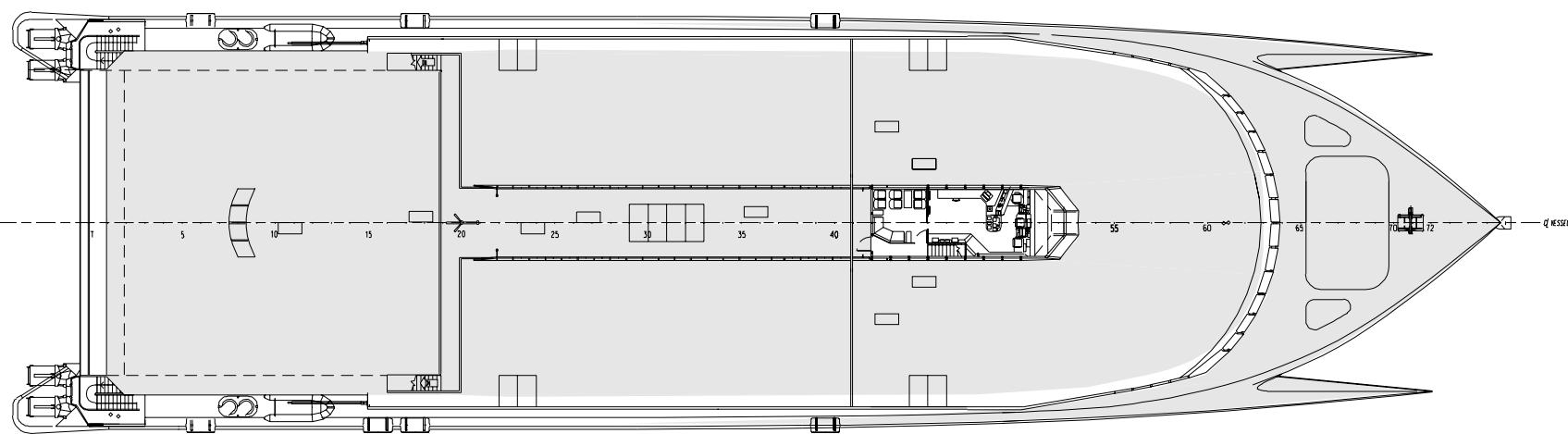


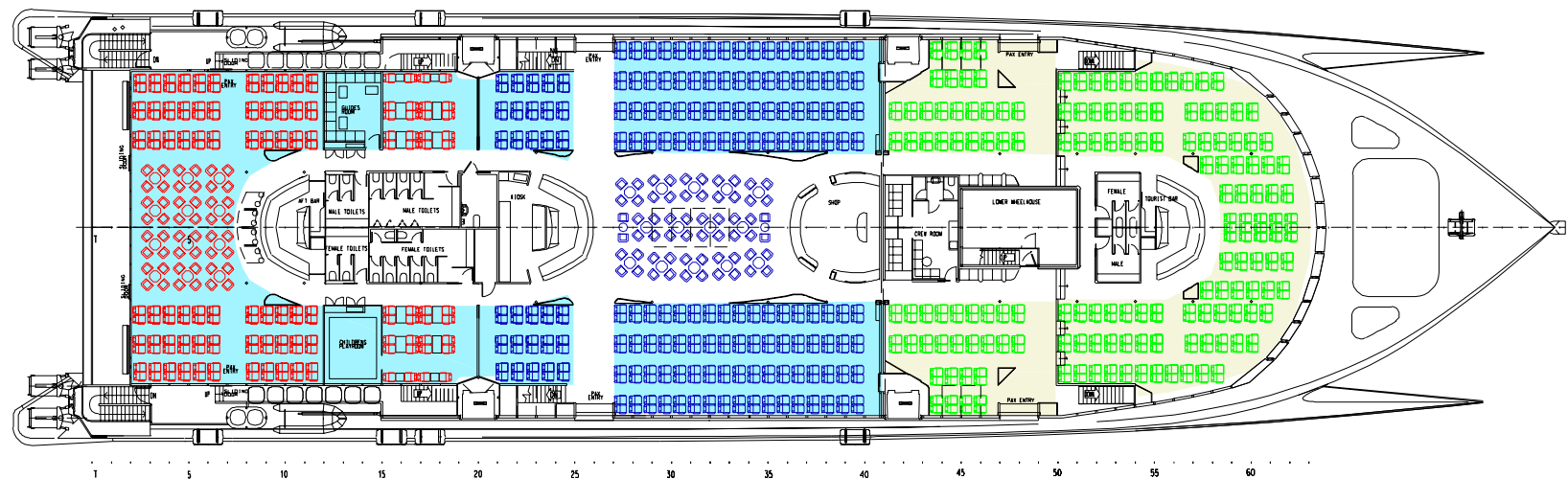
OUTBOARD PROFILE



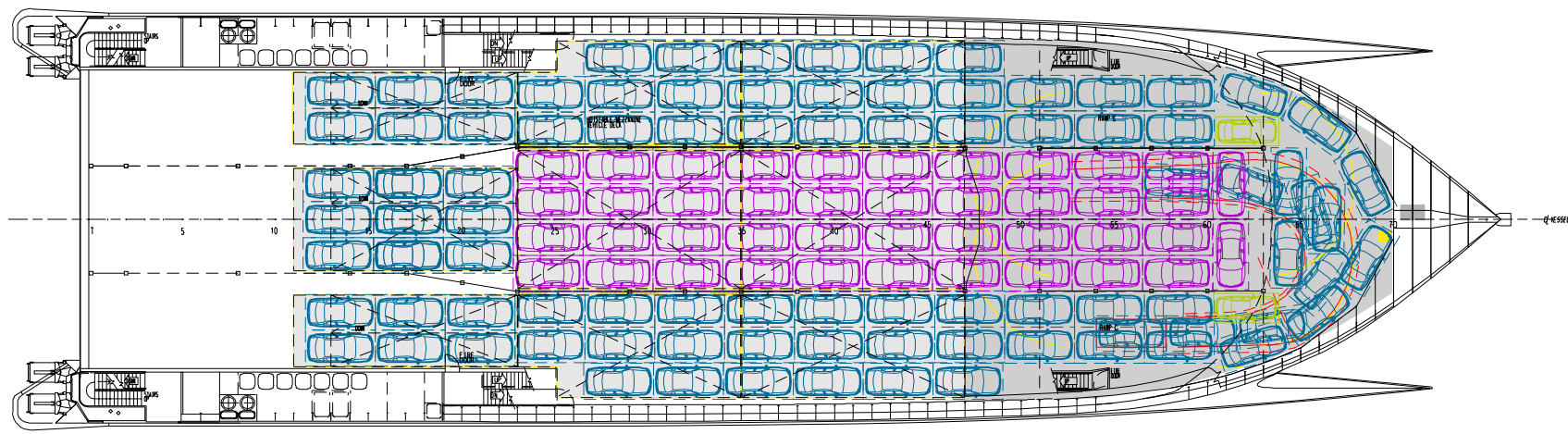
INBOARD PROFILE



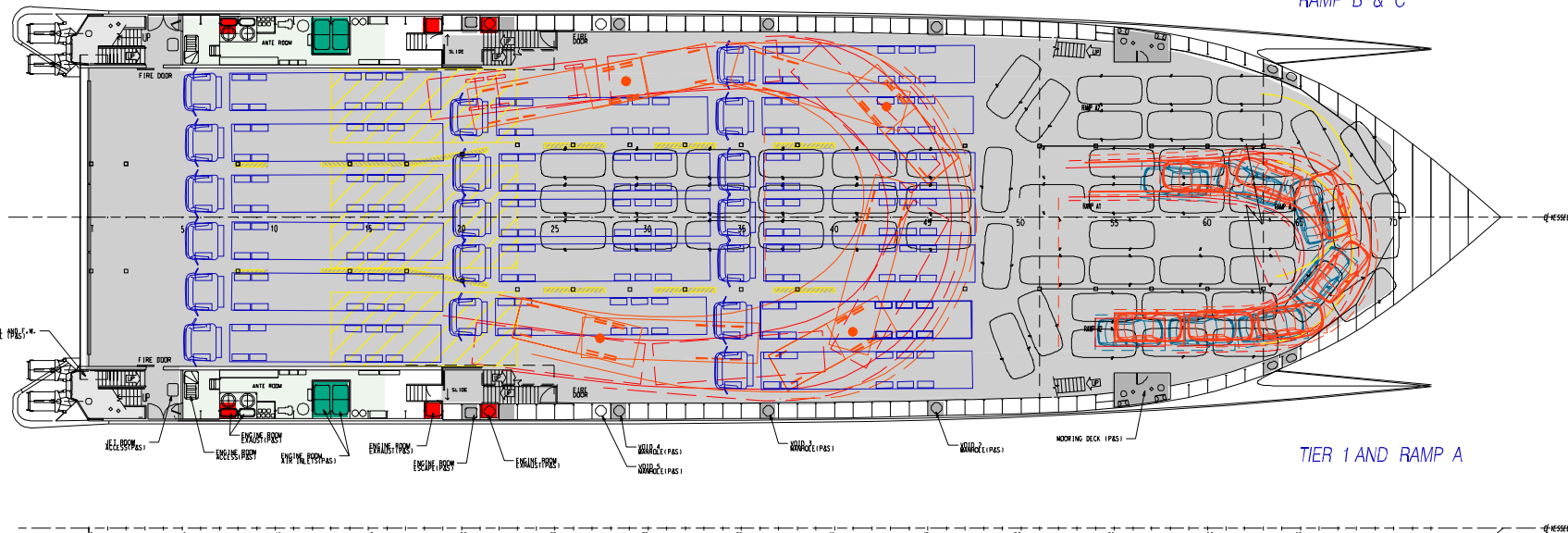
TIER 2 ROOF PLAN AND WHEELHOUSE LAYOUT



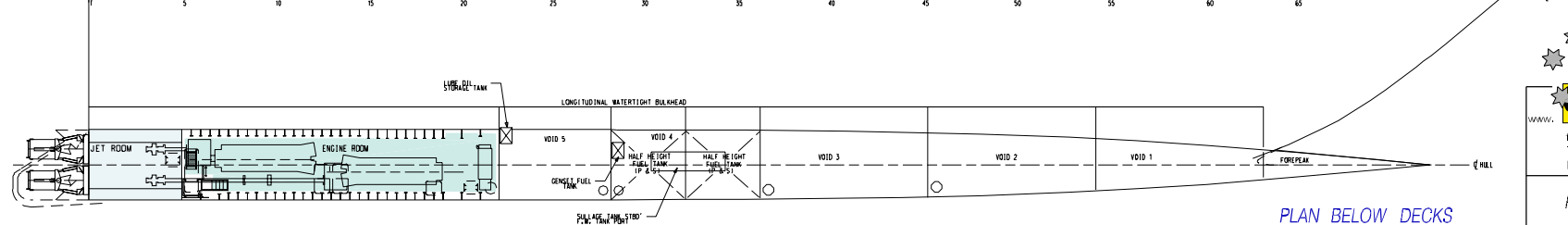
TIER 2 PASSENGER DECK



RAMP B & C



TIER 1 AND RAMP A



PLAN BELOW DECKS

Fred. Olsen

96

LENGTH OVERALL 95.47M
 LENGTH WATERLINE 86.25M
 BEAM OVERALL 26.00M
 TOTAL CAR CAPACITY APPROX. 271 CARS @4.5M x 2.3M

REDUCED CAR CAPACITY WITH ALL MEZZANINES RAISED FOR TRUCK CLEARANCE APPROX. 85 CARS @4.5M x 2.3M

TOTAL TRUCK CAPACITY APPROX. 330 LANE METRES

		96M WAVE PIERCING CATAMARAN PRELIMINARY GENERAL ARRANGEMENT
REF: 056-09-32-001	REV.	SCALE (A1) 1:250
DATE: 01MAR'00	DRAWN BY:	

THIS DRAWING AND THE INFORMATION CONTAINED HEREIN IS UNCLASSIFIED AND IS NOT TO BE RELEASED EXCEPT AS AUTHORIZED BY THE SECRETARY OF DEFENSE